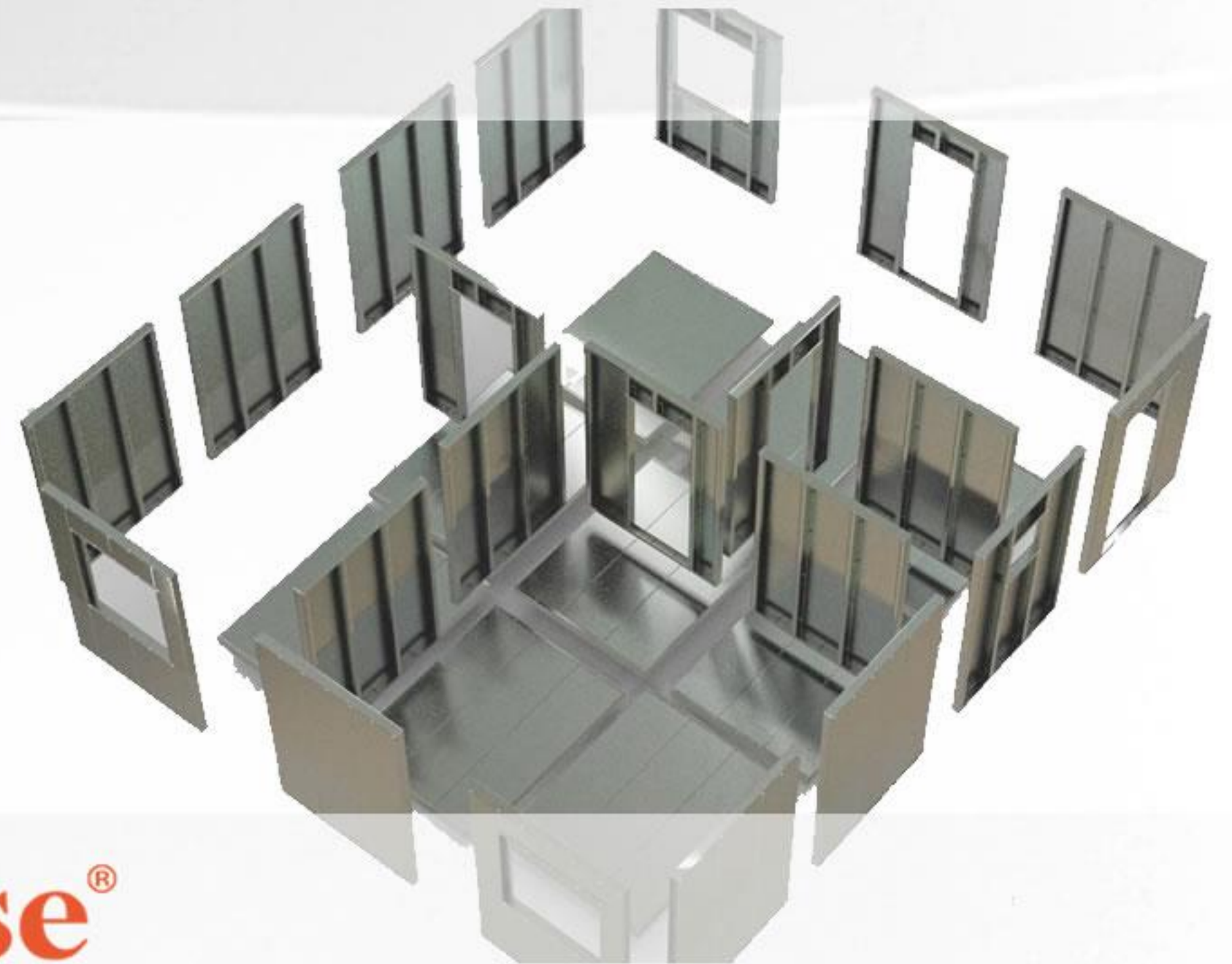


# INTRODUCTION

## CONSTRUCTION SYSTEM



**Quick House®**  
BUILDING SOLUTIONS



The background of the entire image is a close-up, high-angle shot of numerous large, cylindrical metal coils stacked in rows. The coils are made of a dark, reflective metal, likely steel, and their surfaces show some texture and wear. The lighting is dramatic, with strong highlights and deep shadows, creating a sense of depth and industrial scale. The coils are arranged in a way that leads the eye from the foreground into the background.

# Quick House<sup>®</sup>

---

BUILDING SOLUTIONS

**INNOVATION AND TECHNOLOGY FOR FAST CONSTRUCTION**



# CERTIFICATION





United States Patent and Trademark  
Office  
Commissioner for Patents  
P.O. Box 1450  
Alexandria, VA 22313-1450  
[www.uspto.gov](http://www.uspto.gov)

APPLICATION NUMBER:  
62/364,181

FILING OR 371(c) DATE  
07/19/2016

ATTY. DOCKET Nº TPP31321



STEEL PANELS







*HIGH VELOCITY  
HURRICANE ZONE*

In order to build or provide building materials in the United States, companies must explicitly follow the rules and the American building code regulations.

Also the Miami-Dade, Florida, through its Department of Regulatory Resources and Economic (RER) establishes quality tests and requirements that must be met by buildings and products, especially being located in the path of hurricanes.

When you receive your Notice of Acceptance (NOA) issued by the product control section of Miami-Dade County, the Quick House building system has been approved for use without construction restriction in this region and throughout the country.

This means the Quick House galvanized steel panels are prepared to resist, with durability guarantee, the most adverse weather conditions.







The National Association of Home Builders (NAHB) has been the voice of the real estate American industry. With more than 140,000 members, One third are construction companies and the rest are closely related, such as housing funders, manufacturers and building materials suppliers. Together, each year, they are accountable for about 80% of new homes built in the United States.

In order to have the necessary tools and resources and raise awareness of housing issues, the members receive testing and evaluation of new materials, methods and equipment that improve technology and accessibility of buildings, with educational programs and prison training and also business business opportunities.

The Quick House is proud to be part of the NAHB, as a founding member and member of the International Housing Association, which works to promote the real estate industry through more effective approaches to building homes around the world.





United States Patent and Trademark  
Office  
Commissioner for Patents  
P.O. Box 1450  
Alexandria, VA 22313-1450  
[www.uspto.gov](http://www.uspto.gov)

APPLICATION NUMBER:  
62/364,181

FILING OR 371(c) DATE  
07/19/2016

ATTY.DOCKET Nº TPP31321



STEEL PANELS





# CONSTRUCTION SYSTEM

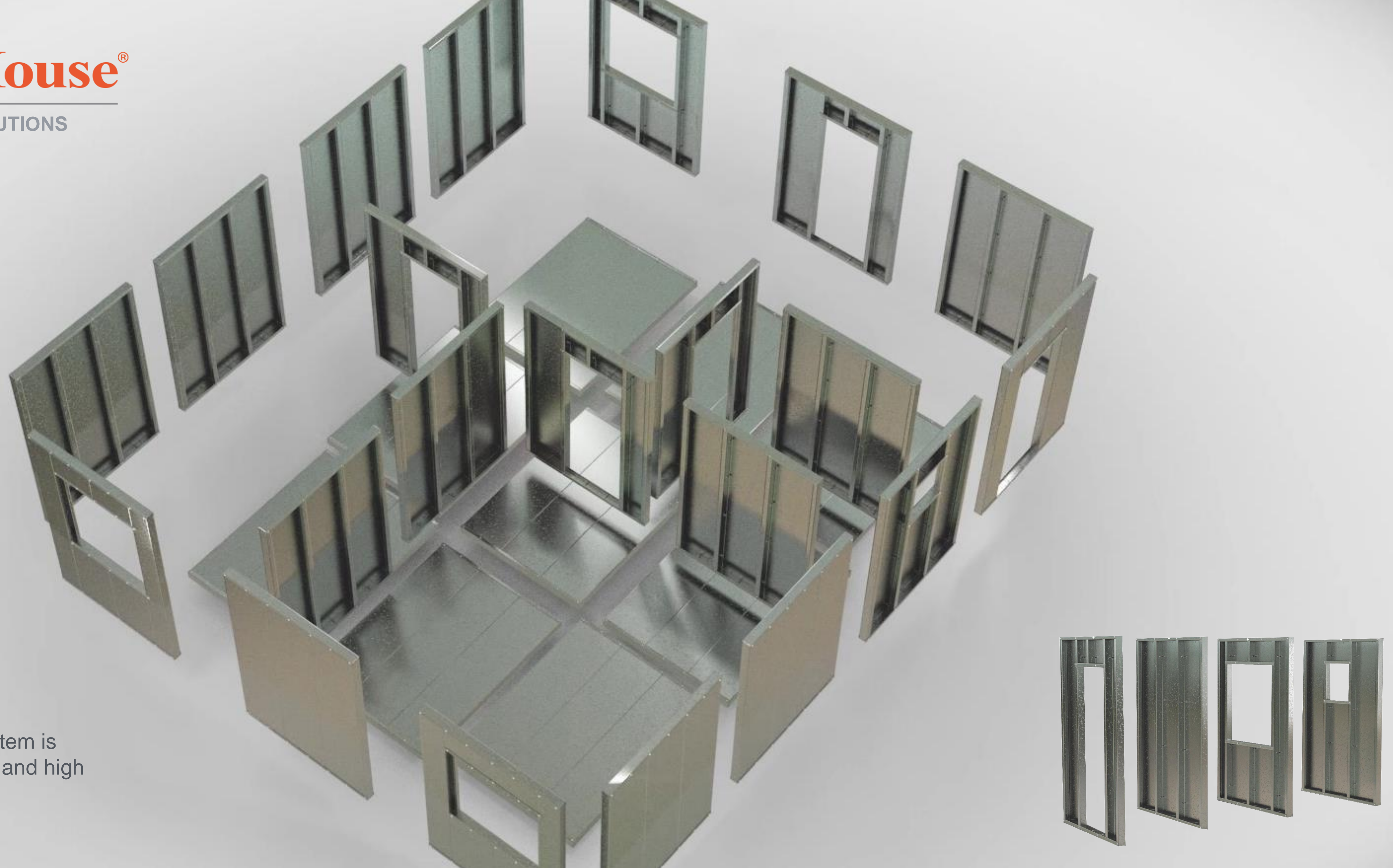
**Quick House®**  
CONSTRUINDO SOLUÇÕES





# Quick House<sup>®</sup>

BUILDING SOLUTIONS



The Quick House system is practical, economical and high performance.

BASIC HOUSE OPEN VIEW  
APPROVED BY CAIXA FEDERAL

**CAIXA**  
CAIXA ECONÔMICA FEDERAL



MIAMI-DADE  
COUNTY

**NAHB**  
National Association  
of Home  
Builders



MODULAR  
STEEL PANELS

DOOR PANEL



WALL PANEL



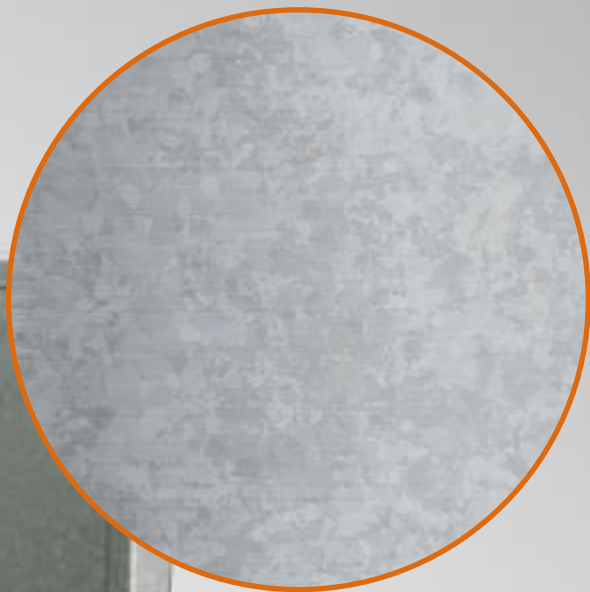
WINDOW PANEL



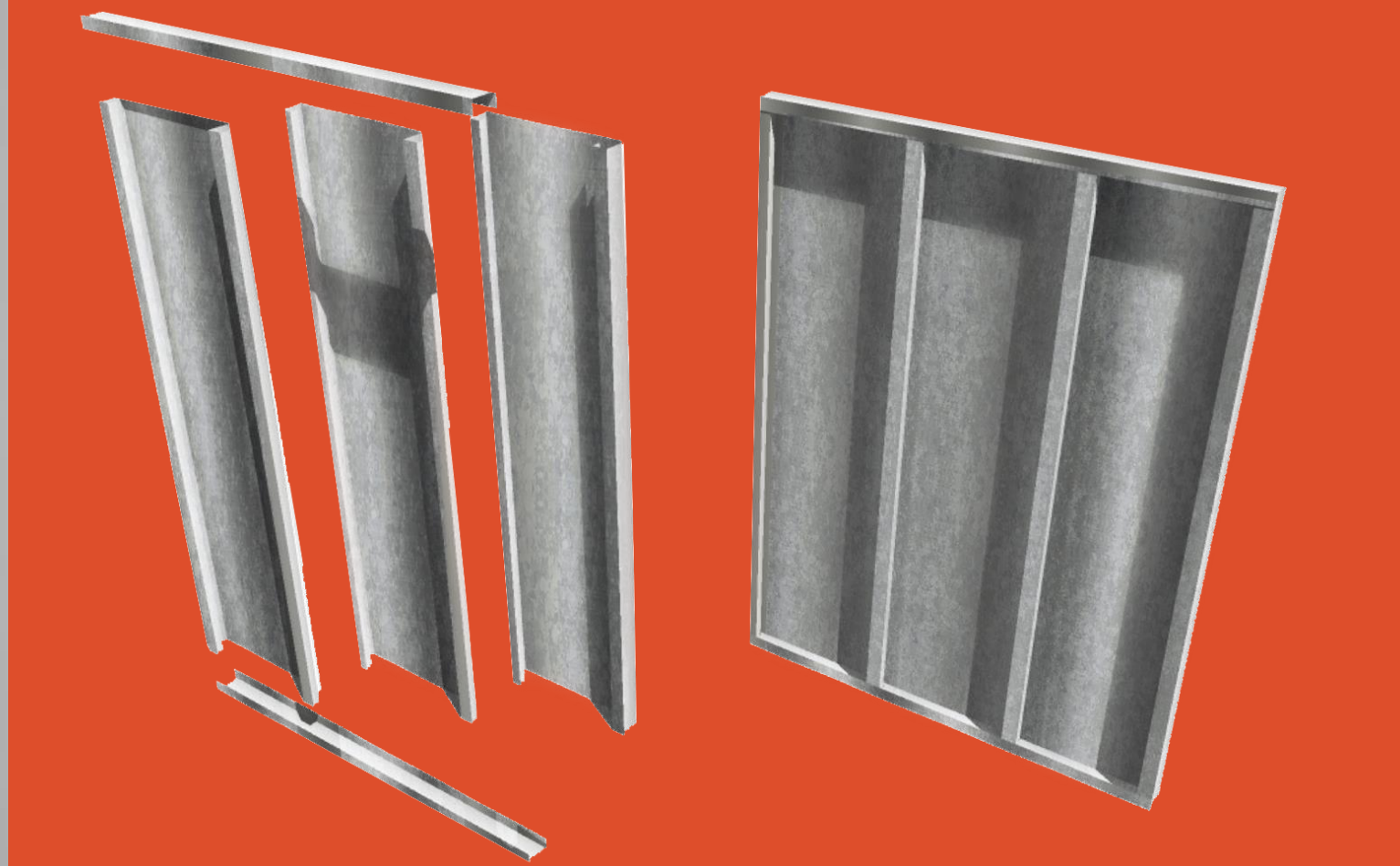
SMALL WINDOW PANEL



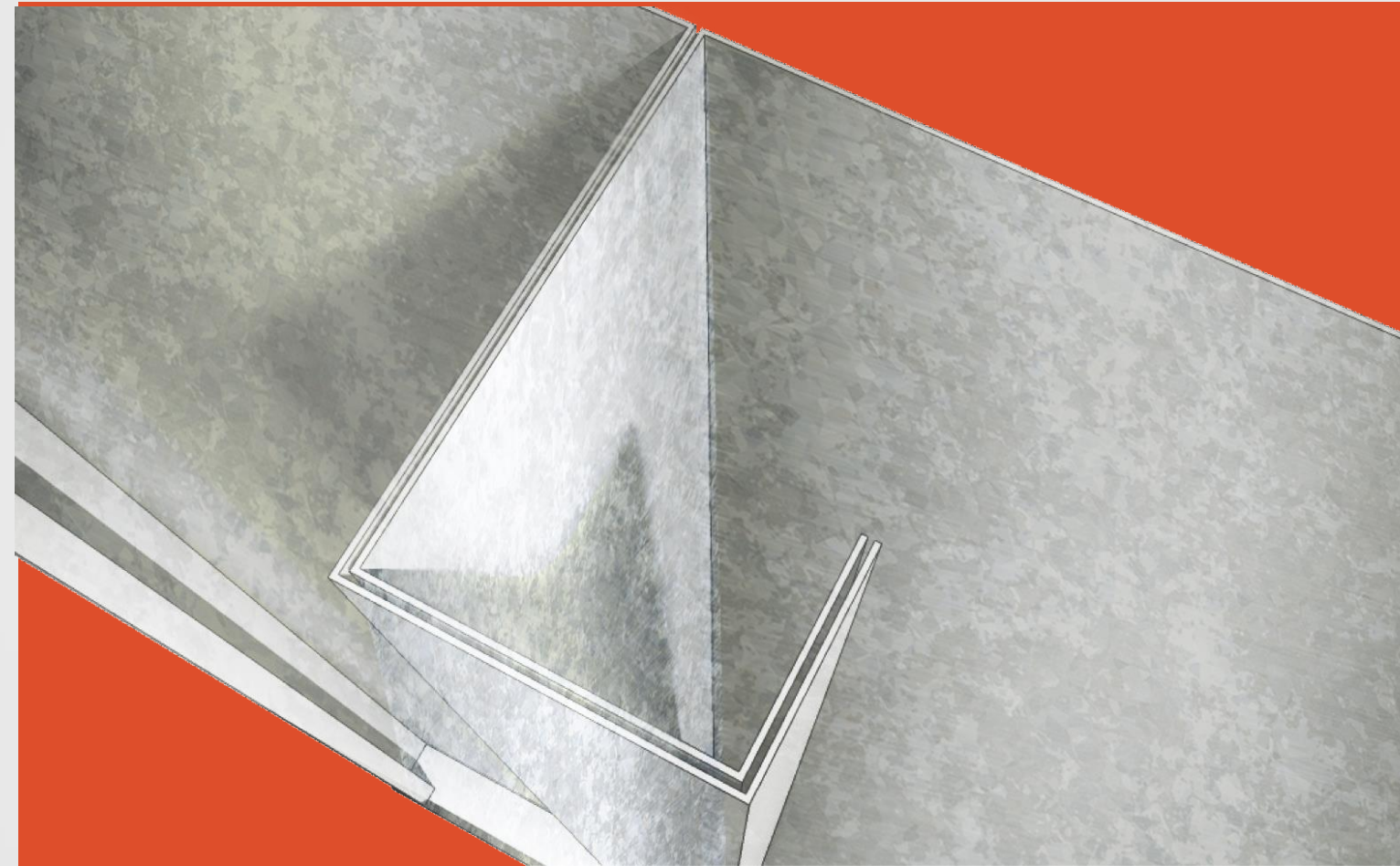
GALVANIZED STEEL



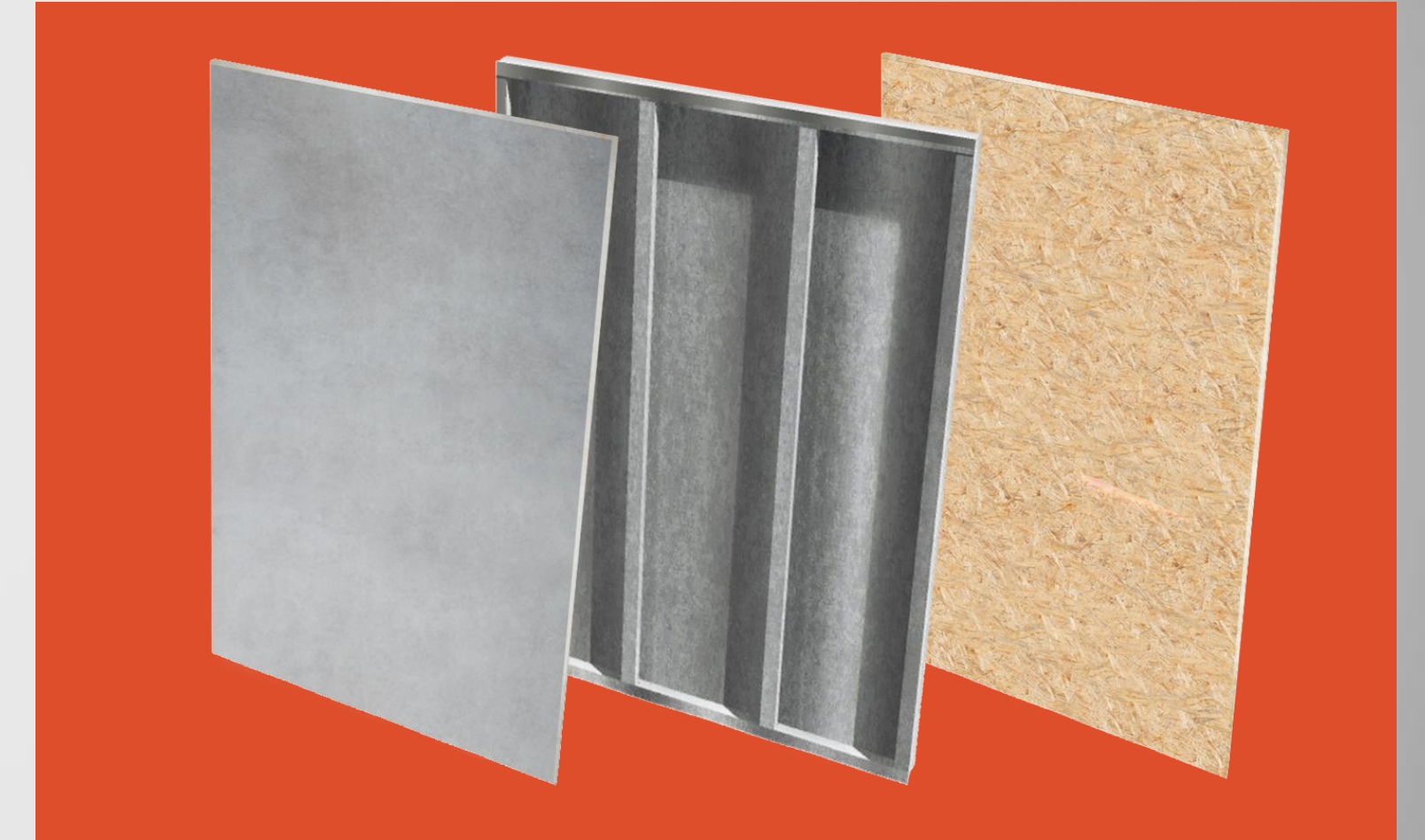




The panels are assembled by joining modules, fitted and screwed to each other.



In the modules joining, every 610 mm, it becomes a column with double plate with compression resistance.



The panels are covered with O.S.B or Cement sheets.





INTERNAL COVERING

STEEL PANEL

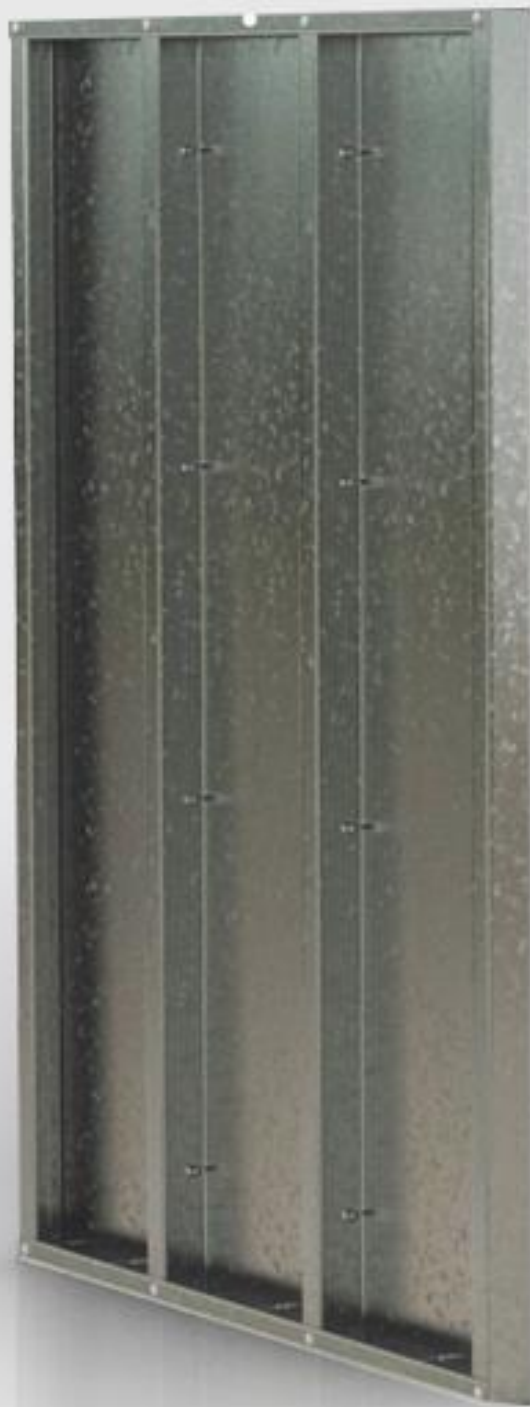
EXTERNAL CLADDING



GYPROCK



FIBERGLASS  
INSULATION  
OPTIONAL



PANEL OSB  
OPTIONAL



PLASTIC  
MEMBRANE  
OPTIONAL



CEMENT  
SHEET



# PRODUCTS







BUILDING SYSTEM TOTALLY FLEXIBLE TO MEET ANY ARCHITECTURAL PROJECT







## HOUSE BUILT IN ONE DAY

\* Walls, Floor and Roof with Quick House panels.

BUILDING SYSTEM QUICK HOUSE FOR BASIC HOUSES – APPROVED BY MY HOUSE MY LIFE PROGRAM  
AUTHORIZED RESELLERS: STORE C&C, LEROY MERLIN, TELHA NORTE E TUMELERO







THE QUICK HOUSE ACT STRONGLY IN PROJECTS AND EXECUTION OF PUBLIC SECTOR WORK. ACTING IN MANY STATES. WE HAVE DELIVERED IN DIFFERENT SEGMENTS AS SECURITY, HEALTH, EDUCATION AND COURTS.





MCDONALD'S  
5382SQ.FT.  
DELIVERED IN 20  
DAYS



CYRELA  
2152SQ.FT.  
DELIVERED IN 10  
DAYS



SHOPS AND STOOLS FOR COMPANIES REQUIRING A  
FAST INSTALLATION.

FASTER OVERALL CONSTRUCTION TIME • EARLIER PROPERTY SETTLEMENT • FASTEST  
INVESTMENT RETURN





1 – AFTER PREPARING THE BLOCK. A CONCRETE FOUNDATION IS BUILT. DURING THIS TIME FRAME, THE WALL PANELS AND THE ROOF STRUCTURE STARTED BEING BUILT IN OUR FACTORY.



2 – ONCE THE CONCRETE FOUNDATION IS READY. THE PANELS ARE DELIVERED IN MODULES AT THE BUILDING SITE AND ATTACHED TO THE MARKED SPOTS.



3 – ONCE THE WALL PANELS ATTACHED THE ROOF STRUCTURE IS BUILT AND THE ROOFTOP IS INSTALLED.

4 – AFTER CONCLUDED THE ROOFTOP ALL THE OTHER SERVICES CAN BE EXECUTED. IT CAN BE DONE DESPITE THE WEATHER FORECAST.







## HIGH STANDARD HOUSE

XANGRILÁ - RS

45 DAYS 5382 SQ.FT

ALLOWING DIFFERENT ARCHITECTURAL STYLES AND DIFFERENT FINISHING INTERNAL AND EXTERNAL





# BENEFITS







## ACOUSTIC AND TEMPERATURE INSULATION

THE QUICK HOUSE SYSTEM HAS THE BEST THERMAL AND ACOUSTIC  
PERFORMANCE ACCORDING TO NBR 15575







FASTEST  
BUILDING  
EXECUTION

WITH MANUFACTURED SYSTEM AND PANELS ARRIVING ON THE BUILDING SITE.  
STREAMLINES THE BUILDING PROCESS.







SPEED AND  
ORGANIZATION







BETTER  
LIVING  
AREA

STRUCTURE SECTION REQUIRE LESS ROOM COMPARED TO SAME STRUCTURES BUILT WITH BRICKS.  
THE QUICK HOUSE SYSTEM CAN INCREASE UP TO 4% THE LIVING AREA.







THE QUICK HOUSE MODULES ARE MANUFACTURED IN OUR OWN FACTORY. WITH CAPACITY TO PRODUCE HIGH DEMANDS TO SUPPLY OUR NATIONAL AND INTERNATIONAL ORDERS.





# COMPARATIVE QUICK HOUSE X STEEL FRAME

**Quick House®**  
BUILDING SOLUTIONS







5 DAYS  
Quick House®

Based in a group of metal panels with default modules built with galvanized plates.

30 DAYS  
STEEL FRAME

Based in a interconnection of metal frames to built the structural system, with uncountable number of mount sections, interlocking, blocking, etc.



QUICK HOUSE



The panels are produced in the factory according to the project specifications allowing an easy assembly with high speed.

The modules are connected to each other forming rigid panels that have freestanding characteristics allowing building execution with two floors without another structure than the panels themselves.

STEEL FRAME



It is a complex system that requires an extremely detailed design and high skilled labor.

The structural system does not associate structure and sealing, as in the Quick House system, the walls are cast until the outer casings are executed.

The walls are only as sealing coatings, being more vulnerable to burglary



# CLIENTS & PARTNERS













# Quick House®

---

## BUILDING SOLUTIONS

FOLLOW US IN OUR SOCIAL NETWORKS AND  
FIND OUT MORE ABOUT OUR PROJECTS:



[WWW.QUICKHOUSE.COM](http://WWW.QUICKHOUSE.COM)